

Lower Thames Crossing
6.2 Environmental Statement Figures
Figure 6.6 - Representative
Viewpoints - Summer View Heritage
Viewpoint (1 of 2)
(Tracked Changes Version)

APFP Regulation 5(2)(a)

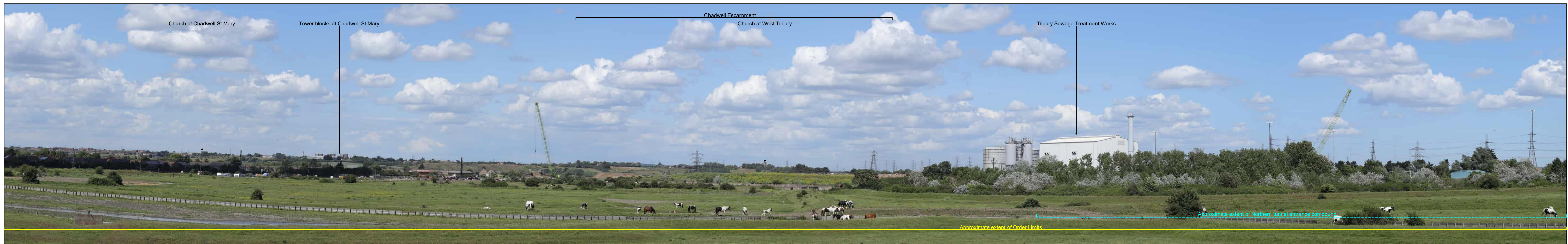
Infrastructure Planning (Applications:
Prescribed Forms and Procedure)
Regulations 2009

Volume 6

DATE: July 2023
DEADLINE: 1

Planning Inspectorate Scheme Ref: TR010032
Application Document Ref: TR010032/APP/6.2

VERSION: 2.0



| P02 | S9 | 12/07/2023 | Deadline 1 | BB | DL | CD |
|-----|--------|------------|---------------------|-------|--------|---------|
| P01 | S8 | 12/09/2022 | First Issued | BB | DL | CD |
| Rev | Status | Rev. Date | Purpose of revision | Drawn | Chck'd | Apprv'd |

For location see Figure 7.16 - Visual Effects Drawing with Representative Viewpoint Locations

Camera: Canon EOS 6D MkII
 Lens: Canon EF 50mm f/1.8 STM
 Equipment: Manfrotto MA 454 Micro Positioning Plate
 Manfrotto SBH-100 Ball Head

Upper Viewpoint (Summer): N-(CH)01
 Date and Time: 03/07/2019 06:42

FL, Max Aperture: 50mm, 1.75
 Tripod Height: 1.5m
 Viewpoint Ground Height: 16.5m AOD
 Viewpoint Grid Reference: 565170E, 175462N

Distance to Order Limits: 590m
 View Direction (Centre of View): ENE
 GPS Accuracy: 5m

Lower Viewpoint (Summer): N-(CH)02
 Date and Time: 03/07/2019 06:50

FL, Max Aperture: 50mm, 1.75
 Tripod Height: 1.5m
 Viewpoint Ground Height: 24.3m AOD
 Viewpoint Grid Reference: 565079E, 175400N

Distance to Order Limits: 585m
 View Direction (Centre of View): N
 GPS Accuracy: 5m



LOWER THAMES CROSSING
 5th Floor Beaufort House
 15 St Botolph Street
 London EC3A 7DT

Project: LOWER THAMES CROSSING
 Drawing title: Figure 6.6
 Representative Viewpoints - Summer View
 Heritage Viewpoint N-(CH)01 & N-(CH)02
 Sheet 1 of 2

| | | |
|---|----|-------------------|
| Drawn | BB | Date - 12/09/2022 |
| Checked | DL | Date - 12/09/2022 |
| Approved | CD | Date - 12/09/2022 |
| Drawing number HE540039-CJV-ELS-SZP_ZZ000000_Z-DR-LV-00196 | | |

Status: PINS SUBMISSION
 Revision: P02
 Application Document No: TR010032/APP/0.2



| P02 | S9 | 12/07/2023 | Deadline 1 | BB | DL | CD |
|-----|--------|------------|---------------------|-------|--------|---------|
| P01 | S8 | 12/09/2022 | First Issued | BB | DL | CD |
| Rev | Status | Rev. Date | Purpose of revision | Drawn | Chck'd | Apprv'd |

For location see Figure 7.16 - Visual Effects Drawing with Representative Viewpoint Locations

Camera: Canon EOS 6D MkII
 Lens: Canon EF 50mm f/1.8 STM
 Equipment: Manfrotto MA 454 Micro Positioning Plate
 Manfrotto SBH-100 Ball Head

Upper Viewpoint (Summer): N-(CH)01
 Date and Time: 03/07/2019 06:42

FL, Max Aperture: 50mm, 1.75
 Tripod Height: 1.5m
 Viewpoint Ground Height: 16.5m AOD
 Viewpoint Grid Reference: 565170E, 175462N

Distance to Order Limits: 590m
 View Direction (Centre of View): ENE
 GPS Accuracy: 5m

Lower Viewpoint (Summer): N-(CH)02
 Date and Time: 03/07/2019 06:50

FL, Max Aperture: 50mm, 1.75
 Tripod Height: 1.5m
 Viewpoint Ground Height: 24.3m AOD
 Viewpoint Grid Reference: 565079E, 175400N

Distance to Order Limits: 585m
 View Direction (Centre of View): N
 GPS Accuracy: 5m



Client

LOWER THAMES CROSSING

5th Floor Beaufort House
 15 St Botolph Street
 London EC3A 7DT

Project

LOWER THAMES CROSSING

Drawing title

Figure 6.6
 Representative Viewpoints - Summer View
 Heritage Viewpoint N-(CH)01 & N-(CH)02
 Sheet 2 of 2

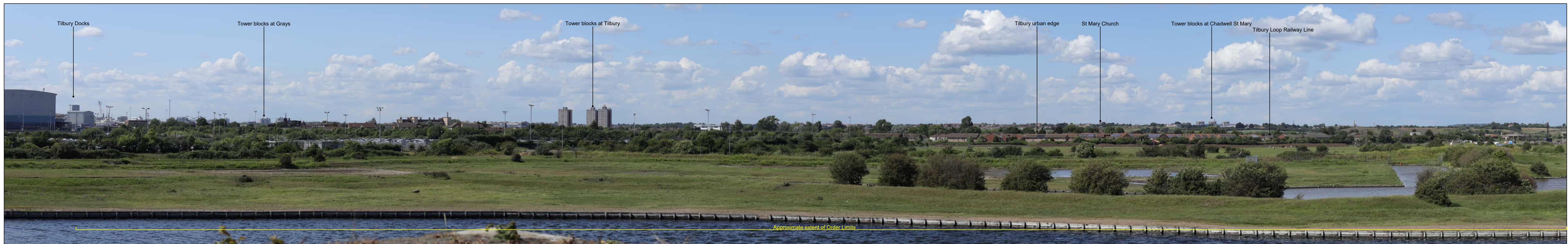
| | | |
|---|----|-------------------|
| Drawn | BB | Date - 12/09/2022 |
| Checked | DL | Date - 12/09/2022 |
| Approved | CD | Date - 12/09/2022 |
| Drawing number | | |
| HE540039-CJV-ELS-SZP_ZZ000000_Z-DR-LV-00197 | | |

Status

PINS SUBMISSION

Revision P02

Application Document No: TR010032/AP/P/0.2



| P02 | S9 | 12/07/2023 | Deadline 1 | BB | DL | CD |
|-----|--------|------------|---------------------|-------|--------|---------|
| P01 | S8 | 12/09/2022 | First Issued | BB | DL | CD |
| Rev | Status | Rev. Date | Purpose of revision | Drawn | Chck'd | Apprv'd |

For location see Figure 7.16 - Visual Effects Drawing with Representative Viewpoint Locations

Camera: Canon EOS 6D MkII
 Lens: Canon EF 50mm f/1.8 STM
 Equipment: Manfrotto MA 454 Micro Positioning Plate
 Manfrotto SBH-100 Ball Head

Upper Viewpoint (Summer): N-(CH)03
 Date and Time: 03/07/2019 07:01

FL, Max Aperture: 50mm, 1.75
 Tripod Height: 1.5m
 Viewpoint Ground Height: 38.1m AOD
 Viewpoint Grid Reference: 564974E, 175441N

Distance to Order Limits: 490m
 View Direction: N
 GPS Accuracy: 5m

Lower Viewpoint (Summer): N-(CH)04
 Date and Time: 03/07/2019 07:12

FL, Max Aperture: 50mm, 1.75
 Tripod Height: 1.5m
 Viewpoint Ground Height: 51.4m AOD
 Viewpoint Grid Reference: 564857E, 175219N

Distance to Order Limits: 620m
 View Direction: NNE
 GPS Accuracy: 5m

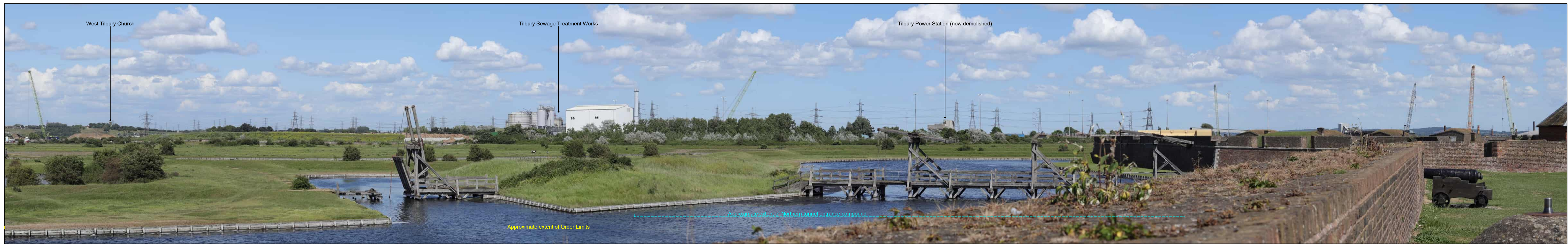


LOWER THAMES CROSSING
 5th Floor Beaufort House
 15 St Botolph Street
 London EC3A 7DT

Project: LOWER THAMES CROSSING
 Drawing title: Figure 6.6
 Representative Viewpoints - Summer View
 Heritage Viewpoint N-(CH)03 & N-(CH)04
 Sheet 1 of 2

| | | |
|---|----|-------------------|
| Drawn | BB | Date - 12/09/2022 |
| Checked | DL | Date - 12/09/2022 |
| Approved | CD | Date - 12/09/2022 |
| Drawing number HE540039-CJV-ELS-SZP_ZZ000000_Z-DR-LV-00198 | | |

Status: PINS SUBMISSION
 Revision: P02
 Application Document No: TR010032/AP/P/6.2



| P02 | S9 | 12/07/2023 | Deadline 1 | BB | DL | CD |
|-----|--------|------------|---------------------|-------|--------|---------|
| P01 | S8 | 12/09/2022 | First Issued | BB | DL | CD |
| Rev | Status | Rev. Date | Purpose of revision | Drawn | Chck'd | Apprv'd |

For location see Figure 7.16 - Visual Effects Drawing with Representative Viewpoint Locations

Camera: Canon EOS 6D MkII
 Lens: Canon EF 50mm f/1.8 STM
 Equipment: Manfrotto MA 454 Micro Positioning Plate
 Manfrotto SBH-100 Ball Head

Upper Viewpoint (Summer): N-(CH)03
 Date and Time: 03/07/2019 07:12

FL, Max Aperture: 50mm, 1.75
 Tripod Height: 1.5m
 Viewpoint Ground Height: 38.1m AOD
 Viewpoint Grid Reference: 564974E, 175441N

Distance to Order Limits: 490m
 View Direction (Centre of View): N
 GPS Accuracy: 5m

Lower Viewpoint (Summer): N-(CH)04
 Date and Time: 03/07/2019 07:12

FL, Max Aperture: 50mm, 1.75
 Tripod Height: 1.5m
 Viewpoint Ground Height: 51.4m AOD
 Viewpoint Grid Reference: 564857E, 175219N

Distance to Order Limits: 620m
 View Direction (Centre of View): NNE
 GPS Accuracy: 5m



Client

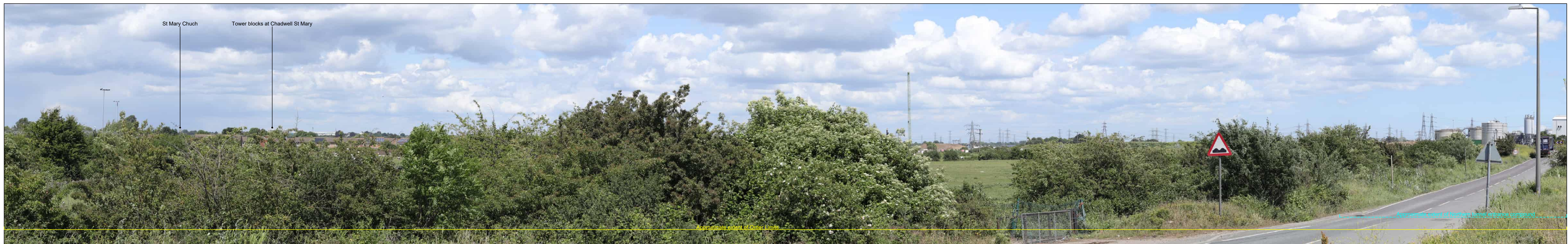
LOWER THAMES CROSSING
 5th Floor Beaufort House
 15 St Botolph Street
 London EC3A 7DT

Project

LOWER THAMES CROSSING
 Drawing title: Figure 6.6
 Representative Viewpoints - Summer View
 Heritage Viewpoint N-(CH)03 & N-(CH)04
 Sheet 2 of 2

| | | |
|---|----|-------------------|
| Drawn | BB | Date - 12/09/2022 |
| Checked | DL | Date - 12/09/2022 |
| Approved | CD | Date - 12/09/2022 |
| Drawing number HE540039-CJV-ELS-SZP_ZZ000000_Z-DR-LV-00199 | | |

Status: **PINS SUBMISSION**
 Revision: P02
 Application Document No: TR010032/APP/6.2



| P02 | S9 | 12/07/2023 | Deadline 1 | BB | DL | CD |
|-----|--------|------------|---------------------|-------|--------|---------|
| P01 | S8 | 12/09/2022 | First Issued | BB | DL | CD |
| Rev | Status | Rev. Date | Purpose of revision | Drawn | Chck'd | Apprv'd |

For location see Figure 7.16 - Visual Effects Drawing with Representative Viewpoint Locations

Camera: Canon EOS 6D MkII
 Lens: Canon EF 50mm f/1.8 STM
 Equipment: Manfrotto MA 454 Micro Positioning Plate
 Manfrotto SBH-100 Ball Head

Upper Viewpoint (Summer): N-(CH)05
 Date and Time: 03/07/2019 05:44

FL, Max Aperture: 50mm, 1.75
 Tripod Height: 1.65m
 Viewpoint Ground Height: 7.9m AOD
 Viewpoint Grid Reference: 564832E, 175633N

Distance to Order Limits: 255m
 View Direction (Centre of View): ENE
 GPS Accuracy: 5m

Lower Viewpoint (Summer): N-(CH)06
 Date and Time: 03/07/2019 06:01

FL, Max Aperture: 50mm, 1.75
 Tripod Height: 1.5m
 Viewpoint Ground Height: 13.2m AOD
 Viewpoint Grid Reference: 565082E, 175630N

Distance to Order Limits: 215m
 View Direction (Centre of View): SE
 GPS Accuracy: 5m

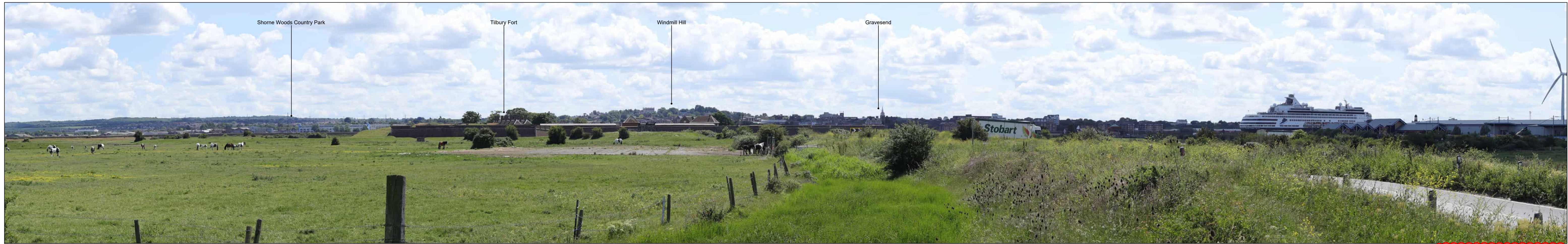


LOWER THAMES CROSSING
 5th Floor Beaufort House
 15 St Botolph Street
 London EC3A 7DT

Project: LOWER THAMES CROSSING
 Drawing title: Figure 6.6
 Representative Viewpoints - Summer View
 Heritage Viewpoint N-(CH)05 & N-(CH)06
 Sheet 1 of 2

| | | |
|---|----|-------------------|
| Drawn | BB | Date - 12/09/2022 |
| Checked | DL | Date - 12/09/2022 |
| Approved | CD | Date - 12/09/2022 |
| Drawing number HE540039-CJV-ELS-SZP_ZZ000000_Z-DR-LV-00200 | | |

Status: **PINS SUBMISSION**
 Revision: P02
 Application Document No: TR010032/APP/6.2



| P02 | S9 | 12/07/2023 | Deadline 1 | BB | DL | CD |
|-----|--------|------------|---------------------|-------|--------|--------|
| P01 | S8 | 12/09/2022 | First Issued | BB | DL | CD |
| Rev | Status | Rev. Date | Purpose of revision | Drawn | Chck'd | Appr'd |

For location see Figure 7.16 - Visual Effects Drawing with Representative Viewpoint Locations

Camera: Canon EOS 6D MkII
 Lens: Canon EF 50mm f/1.8 STM
 Equipment: Manfrotto MA 454 Micro Positioning Plate
 Manfrotto SBH-100 Ball Head

Upper Viewpoint (Summer): N-(CH)05
 Date and Time: 03/07/2019 05:44

FL, Max Aperture: 50mm, 1.75
 Tripod Height: 1.65m
 Viewpoint Ground Height: 7.9m AOD
 Viewpoint Grid Reference: 564832E, 175633N

Distance to Order Limits: 255m
 View Direction (Centre of View): ENE
 GPS Accuracy: 5m

Lower Viewpoint (Summer): N-(CH)06
 Date and Time: 03/07/2019 06:01

FL, Max Aperture: 50mm, 1.75
 Tripod Height: 1.5m
 Viewpoint Ground Height: 13.2m AOD
 Viewpoint Grid Reference: 565082E, 175660N

Distance to Order Limits: 215m
 View Direction (Centre of View): SE
 GPS Accuracy: 5m



Client

LOWER THAMES CROSSING
 5th Floor Beaufort House
 15 St Botolph Street
 London EC3A 7DT

Project

LOWER THAMES CROSSING

Drawing title

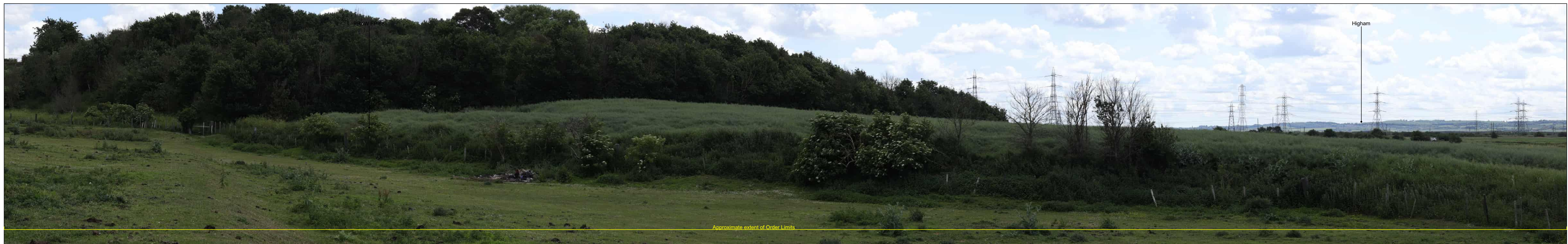
Figure 6.6
 Representative Viewpoints - Summer View
 Heritage Viewpoint N-(CH)05 & N-(CH)06
 Sheet 2 of 2

| | | |
|---|----|-------------------|
| Drawn | BB | Date - 12/09/2022 |
| Checked | DL | Date - 12/09/2022 |
| Approved | CD | Date - 12/09/2022 |
| Drawing number | | |
| HE540039-CJV-ELS-SZP_ZZ000000_Z-DR-LV-00201 | | |

Status: **PINS SUBMISSION**

Revision: P02

Application Document No: TR010032/APP/0.2



| P02 | S9 | 12/07/2023 | Deadline 1 | BB | DL | CD |
|-----|--------|------------|---------------------|-------|--------|---------|
| P01 | S8 | 12/09/2022 | First Issued | BB | DL | CD |
| Rev | Status | Rev. Date | Purpose of revision | Drawn | Chck'd | Apprv'd |

For location see Figure 7.16 - Visual Effects Drawing with Representative Viewpoint Locations

Camera: Canon EOS 6D MkII
 Lens: Canon EF 50mm f/1.8 STM
 Equipment: Manfrotto MA 454 Micro Positioning Plate
 Manfrotto SBH-100 Ball Head

Upper Viewpoint (Summer): N-(CH)07
 Date and Time: 06/06/2019 12:21

FL, Max Aperture: 50mm, 1.75
 Tripod Height: 1.5m
 Viewpoint Ground Height: 0.1m AOD
 Viewpoint Grid Reference: 565826E, 177715N

Distance to Order Limits: 30m
 View Direction (Centre of View): SSW
 GPS Accuracy: 5m

Lower Viewpoint (Winter): N-(CH)08
 Date and Time: 18/02/2019 13:58

FL, Max Aperture: 50mm, 1.75
 Tripod Height: 1.5m
 Viewpoint Ground Height: 6.1m AOD
 Viewpoint Grid Reference: 567740E, 177034N

Distance to Order Limits: 0m
 View Direction (Centre of View): W
 GPS Accuracy: 5m



Client

LOWER THAMES CROSSING
 5th Floor Beaufort House
 15 St Botolph Street
 London EC3A 7DT

Project LOWER THAMES CROSSING

Drawing title Figure 6.6
 Representative Viewpoints - Summer & Winter View
 Heritage Viewpoint N-(CH)07 & N-(CH)08
 Sheet 1 of 2

| | | |
|----------------|----|-------------------|
| Drawn | BB | Date - 12/09/2022 |
| Checked | DL | Date - 12/09/2022 |
| Approved | CD | Date - 12/09/2022 |
| Drawing number | | |

Status: **PINS SUBMISSION** Revision: P02
 Application Document No: TR010032/AP P/6.2

HE540039-CJV-ELS-SZP_ZZ000000_Z-DR-LV-00202



PHOTO FRAME INTENTIONALLY BLANK

| P02 | S9 | 12/07/2023 | Deadline 1 | BB | DL | CD |
|-----|--------|------------|---------------------|-------|--------|---------|
| P01 | S8 | 12/09/2022 | First Issued | BB | DL | CD |
| Rev | Status | Rev. Date | Purpose of revision | Drawn | Chck'd | Apprv'd |

| | | | | | |
|---|--|---------------------------|---|---------------------------|-----|
| For location see Figure 7.16 - Visual Effects Drawing with Representative Viewpoint Locations | | | Upper Viewpoint (Summer): N-(CH)07 | | |
| | | | Date and Time: 06/06/2019 12:21 | | |
| Camera: | Canon EOS 6D MkII | FL, Max Aperture: | 50mm, 1.75 | Distance to Order Limits: | 30m |
| Lens: | Canon EF 50mm f/1.8 STM | Tripod Height: | 1.5m | View Direction | SSW |
| Equipment: | Manfrotto MA 454 Micro Positioning Plate | Viewpoint Ground Height: | 0.1m AOD | (Centre of View): | SSW |
| | Manfrotto SBH-100 Ball Head | Viewpoint Grid Reference: | 565826E, 177715N | GPS Accuracy: | 5m |



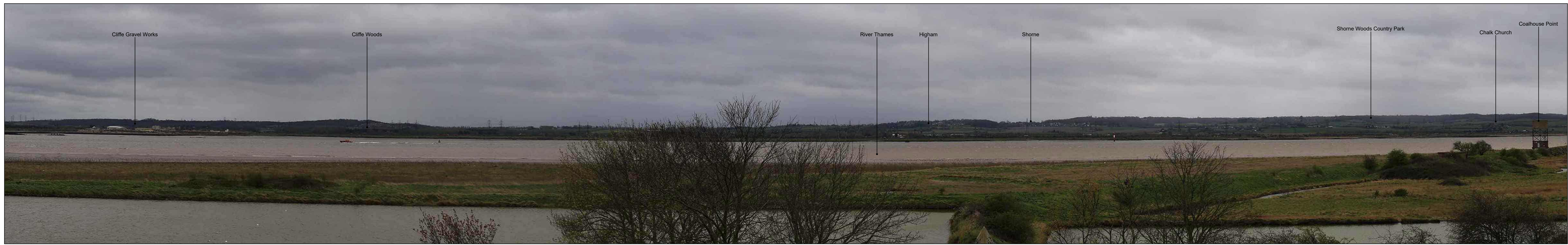
LOWER THAMES CROSSING
 5th Floor Beaufort House
 15 St Botolph Street
 London EC3A 7DT

Project: LOWER THAMES CROSSING
 Drawing title: Figure 6.6
 Representative Viewpoints - Summer View
 Heritage Viewpoint N-(CH)07 & N-(CH)08
 Sheet 2 of 2

| | | |
|----------------|----|-------------------|
| Drawn | BB | Date - 12/09/2022 |
| Checked | DL | Date - 12/09/2022 |
| Approved | CD | Date - 12/09/2022 |
| Drawing number | | |

| | |
|---|----------|
| Status | Revision |
| PINS SUBMISSION | P02 |
| Application Document No: TR010032/APP/6.2 | |

HE540039-CJV-ELS-SZP_ZZ000000_Z-DR-LV-00203



| P02 | S9 | 12/07/2023 | Deadline 1 | BB | DL | CD |
|-----|--------|------------|---------------------|-------|--------|---------|
| P01 | S8 | 12/09/2022 | First Issued | BB | DL | CD |
| Rev | Status | Rev. Date | Purpose of revision | Drawn | Chck'd | Apprv'd |

For location see Figure 7.16 - Visual Effects Drawing with Representative Viewpoint Locations

Camera: Canon EOS 6D MkII
 Lens: Canon EF 50mm f/1.8 STM
 Equipment: Manfrotto MA 454 Micro Positioning Plate
 Manfrotto SBH-100 Ball Head

Upper Viewpoint (Winter): N-(CH)09
 Date and Time: 06/04/2022 12:40

FL, Max Aperture: 50mm, 1.75
 Tripod Height: 1.5m
 Viewpoint Ground Height: 17.4m AOD
 Viewpoint Grid Reference: 569093E, 176768N

View Direction: SSW
 Distance to Order Limits: 185m
 (Centre of View): SSW
 GPS Accuracy: 5m

Lower Viewpoint (Summer): N-(CH)09
 Date and Time: 14/06/2022 08:24

FL, Max Aperture: 50mm, 1.75
 Tripod Height: 1.5m
 Viewpoint Ground Height: 17.4m AOD
 Viewpoint Grid Reference: 569093E, 176768N

View Direction: SSW
 Distance to Order Limits: 185m
 (Centre of View): SSW
 GPS Accuracy: 5m



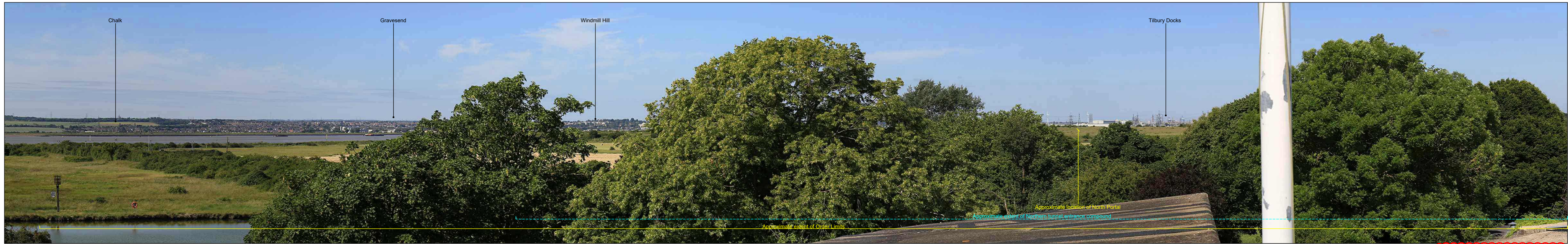
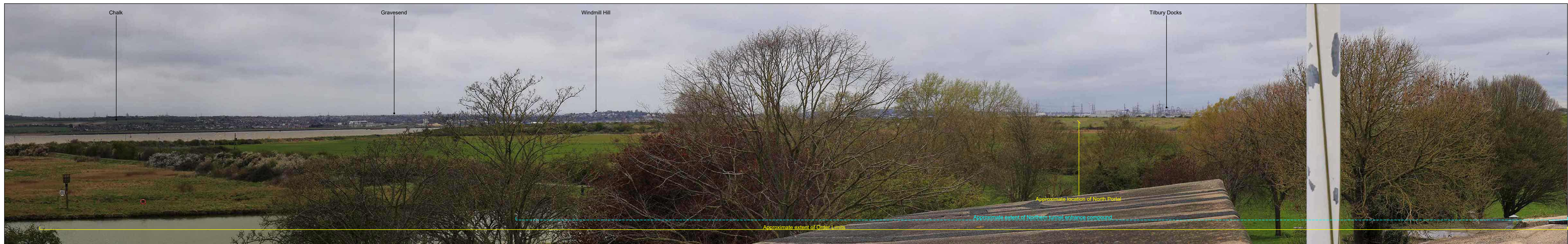
Client
LOWER THAMES CROSSING
 5th Floor Beaufort House
 15 St Botolph Street
 London EC3A 7DT

Project
 LOWER THAMES CROSSING

Drawing title
 Figure 6.6
 Representative Viewpoints - Winter and Summer View
 Heritage Viewpoint N-(CH)09
 Sheet 1 of 3

| | | |
|---|----|-------------------|
| Drawn | BB | Date - 12/09/2022 |
| Checked | DL | Date - 12/09/2022 |
| Approved | CD | Date - 12/09/2022 |
| Drawing number HE540039-CJV-ELS-SZP_ZZ000000_Z-DR-LV-00204 | | |

| | |
|--|----------|
| Status | Revision |
| PINS SUBMISSION | P02 |
| Application Document No: TR010032/AP/P/6.2 | |



| P02 | S9 | 12/07/2023 | Deadline 1 | BB | DL | CD |
|-----|--------|------------|---------------------|-------|--------|---------|
| P01 | S8 | 12/09/2022 | First Issued | BB | DL | CD |
| Rev | Status | Rev. Date | Purpose of revision | Drawn | Chck'd | Apprv'd |

For location see Figure 7.16 - Visual Effects Drawing with Representative Viewpoint Locations

Camera: Canon EOS 6D MkII
 Lens: Canon EF 50mm f/1.8 STM
 Equipment: Manfrotto MA 454 Micro Positioning Plate
 Manfrotto SBH-100 Ball Head

Upper Viewpoint (Winter): N-(CH)09
 Date and Time: 06/04/2022 12:40

FL, Max Aperture: 50mm, 1.75
 Tripod Height: 1.5m
 Viewpoint Ground Height: 17.4m AOD
 Viewpoint Grid Reference: 569093E, 176768N

Lower Viewpoint (Summer): N-(CH)09
 Date and Time: 14/06/2022 08:24

FL, Max Aperture: 50mm, 1.75
 Tripod Height: 1.5m
 Viewpoint Ground Height: 17.4m AOD
 Viewpoint Grid Reference: 569093E, 176768N



Client

LOWER THAMES CROSSING
 5th Floor Beaufort House
 15 St Botolph Street
 London EC3A 7DT

Project

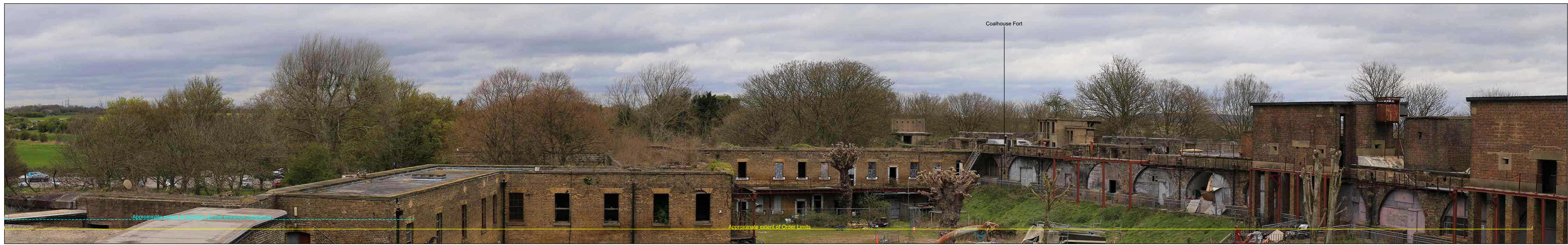
LOWER THAMES CROSSING

Drawing title

Figure 6.6
 Representative Viewpoints - Winter and Summer View
 Heritage Viewpoint N-(CH)09
 Sheet 2 of 3

| | | |
|---|----|-------------------|
| Drawn | BB | Date - 12/09/2022 |
| Checked | DL | Date - 12/09/2022 |
| Approved | CD | Date - 12/09/2022 |
| Drawing number | | |
| HE540039-CJV-ELS-SZP_ZZ000000_Z-DR-LV-00205 | | |

| | |
|--|----------|
| Status | Revision |
| PINS SUBMISSION | P02 |
| Application Document No: TR010032/AP/P/6.2 | |



| P02 | S9 | 12/07/2023 | Deadline 1 | BB | DL | CD |
|-----|--------|------------|---------------------|-------|--------|---------|
| P01 | S8 | 12/09/2022 | First Issued | BB | DL | CD |
| Rev | Status | Rev. Date | Purpose of revision | Drawn | Chck'd | Apprv'd |

For location see Figure 7.16 - Visual Effects Drawing with Representative Viewpoint Locations

Camera: Canon EOS 6D MkII
 Lens: Canon EF 50mm f/1.8 STM
 Equipment: Manfrotto MA 454 Micro Positioning Plate
 Manfrotto SBH-100 Ball Head

Upper Viewpoint (Winter): N-(CH)09
 Date and Time: 06/04/2022 12:40

FL, Max Aperture: 50mm, 1.75
 Tripod Height: 1.5m
 Viewpoint Ground Height: 17.4m AOD
 Viewpoint Grid Reference: 569093E, 176768N

Distance to Order Limits: 185m
 View Direction (Centre of View): SSW
 GPS Accuracy: 5m

Lower Viewpoint (Summer): N-(CH)09
 Date and Time: 14/06/2022 08:24

FL, Max Aperture: 50mm, 1.75
 Tripod Height: 1.5m
 Viewpoint Ground Height: 17.4m AOD
 Viewpoint Grid Reference: 569093E, 176768N

Distance to Order Limits: 185m
 View Direction (Centre of View): SSW
 GPS Accuracy: 5m



Client

LOWER THAMES CROSSING
 5th Floor Beaufort House
 15 St Botolph Street
 London EC3A 7DT

Project

LOWER THAMES CROSSING
 Figure 6.6
 Representative Viewpoints - Winter and Summer View
 Heritage Viewpoint N-(CH)09
 Sheet 3 of 3

| | | |
|---|----|-------------------|
| Drawn | BB | Date - 12/09/2022 |
| Checked | DL | Date - 12/09/2022 |
| Approved | CD | Date - 12/09/2022 |
| Drawing number HE540039-CJV-ELS-SZP_ZZ000000_Z-DR-LV-00206 | | |

| | |
|--|----------|
| Status | Revision |
| PINS SUBMISSION | P02 |
| Application Document No: TR010032/AP P/6.2 | |



| P02 | S9 | 12/07/2023 | Deadline 1 | BB | DL | CD |
|-----|--------|------------|---------------------|-------|-------|--------|
| P01 | S8 | 12/09/2022 | First Issued | BB | DL | CD |
| Rev | Status | Rev. Date | Purpose of revision | Drawn | Chk'd | Appr'd |

For location see Figure 7.16 - Visual Effects Drawing with Representative Viewpoint Locations

Camera: Canon EOS 6D MkII
 Lens: Canon EF 50mm f/1.8 STM
 Equipment: Manfrotto MA 454 Micro Positioning Plate
 Manfrotto SBH-100 Ball Head

Upper Viewpoint (Summer): N-(CH)10
 Date and Time: 03/06/2019 10:26

FL, Max Aperture: 50mm, 1.75
 Tripod Height: 1.5m
 Viewpoint Ground Height: 1.6m AOD
 Viewpoint Grid Reference: 568975E, 176330N

Distance to Order Limits: 60m
 View Direction (Centre of View): SW
 GPS Accuracy: 5m

Lower Viewpoint (Summer): N-(CH)11
 Date and Time: 04/06/2019 11:30

FL, Max Aperture: 50mm, 1.75
 Tripod Height: 1.8m
 Viewpoint Ground Height: 31m AOD
 Viewpoint Grid Reference: 563430E, 181199N

Distance to Order Limits: 11m
 View Direction (Centre of View): SW
 GPS Accuracy: 5m



LOWER THAMES CROSSING
 5th Floor Beaufort House
 15 St Botolph Street
 London EC3A 7DT

Project: LOWER THAMES CROSSING
 Drawing title: Figure 6.6
 Representative Viewpoints - Summer View
 Heritage Viewpoint N-(CH)10 and N-(CH)11
 Sheet 1 of 2

| | | |
|---|----|-------------------|
| Drawn | BB | Date - 12/09/2022 |
| Checked | DL | Date - 12/09/2022 |
| Approved | CD | Date - 12/09/2022 |
| Drawing number HE540039-CJV-ELS-SZP_ZZ000000_Z-DR-LV-00207 | | |

Status: **PINS SUBMISSION**
 Revision: P02
 Application Document No: TR010032/APP/6.2



PHOTO FRAME INTENTIONALLY BLANK

| P02 | S9 | 12/07/2023 | Deadline 1 | BB | DL | CD |
|-----|--------|------------|---------------------|-------|--------|---------|
| P01 | S8 | 12/09/2022 | First Issued | BB | DL | CD |
| Rev | Status | Rev. Date | Purpose of revision | Drawn | Chck'd | Apprv'd |

| | | | | | |
|---|--|---------------------------|---|---------------------------|----------------------|
| For location see Figure 7.16 - Visual Effects Drawing with Representative Viewpoint Locations | | | Upper Viewpoint (Summer): N-(CH)10 | | |
| | | | Date and Time: 03/06/2019 10:26 | | |
| Camera: | Canon EOS 6D MkII | FL, Max Aperture: | 50mm, 1.75 | Distance to Order Limits: | 60m |
| Lens: | Canon EF 50mm f/1.8 STM | Tripod Height: | 1.5m | View Direction | (Centre of View): SW |
| Equipment: | Manfrotto MA 454 Micro Positioning Plate | Viewpoint Ground Height: | 1.6m AOD | GPS Accuracy: | 5m |
| | Manfrotto SBH-100 Ball Head | Viewpoint Grid Reference: | 568975E, 176330N | | |



LOWER THAMES CROSSING
 5th Floor Beaufort House
 15 St Botolph Street
 London EC3A 7DT

Project: LOWER THAMES CROSSING
 Drawing title: Figure 6.6
 Representative Viewpoints - Summer View
 Heritage Viewpoint N-(CH)10 and N-(CH)11
 Sheet 2 of 2

| | | |
|--|----|-------------------|
| Drawn | BB | Date - 12/09/2022 |
| Checked | DL | Date - 12/09/2022 |
| Approved | CD | Date - 12/09/2022 |
| Drawing number HE540039-CJV-ELS-SZP_ZZ000000_Z-DR-LV-00208 | | |

| | |
|---|----------|
| Status | Revision |
| PINS SUBMISSION | P02 |
| Application Document No: TR010032/APP/6.2 | |



PHOTO FRAME INTENTIONALLY BLANK

| P02 | S9 | 12/07/2023 | Deadline 1 | BB | DL | CD |
|-----|--------|------------|---------------------|-------|--------|---------|
| P01 | S8 | 12/09/2022 | First Issued | BB | DL | CD |
| Rev | Status | Rev. Date | Purpose of revision | Drawn | Chck'd | Apprv'd |

For location see Figure 7.16 - Visual Effects Drawing with Representative Viewpoint Locations

Camera: Canon EOS 6D MkII
 Lens: Canon EF 50mm f/1.8 STM
 Equipment: Manfrotto MA 454 Micro Positioning Plate
 Manfrotto SBH-100 Ball Head

Upper Viewpoint (Summer): N-(CH)12
 Date and Time: 04/06/2019 11:09

FL, Max Aperture: 50mm, 1.75
 Tripod Height: 1.5m
 Viewpoint Ground Height: 21.8m AOD
 Viewpoint Grid Reference: 562247E, 180911N

Distance to Order Limits: 0m
 View Direction (Centre of View): ENE
 GPS Accuracy: 5m



Client

LOWER THAMES CROSSING
 5th Floor Beaufort House
 15 St Botolph Street
 London EC3A 7DT

Project

LOWER THAMES CROSSING

Drawing title

Figure 6.6
 Representative Viewpoints - Summer View
 Heritage Viewpoint N-(CH)12
 Sheet 1 of 2

| | | |
|---|----|-------------------|
| Drawn | BB | Date - 12/09/2022 |
| Checked | DL | Date - 12/09/2022 |
| Approved | CD | Date - 12/09/2022 |
| Drawing number | | |
| HE540039-CJV-ELS-SZP_ZZ000000_Z-DR-LV-00209 | | |

| | |
|---|----------|
| Status | Revision |
| PINS SUBMISSION | P02 |
| Application Document No: TR010032/APP/6.2 | |



PHOTO FRAME INTENTIONALLY BLANK

| P02 | S9 | 12/07/2023 | Deadline 1 | BB | DL | CD |
|-----|--------|------------|---------------------|-------|--------|---------|
| P01 | S8 | 12/09/2022 | First Issued | BB | DL | CD |
| Rev | Status | Rev. Date | Purpose of revision | Drawn | Chck'd | Apprv'd |

For location see Figure 7.16 - Visual Effects Drawing with Representative Viewpoint Locations

Camera: Canon EOS 6D MkII
 Lens: Canon EF 50mm f/1.8 STM
 Equipment: Manfrotto MA 454 Micro Positioning Plate
 Manfrotto SBH-100 Ball Head

Upper Viewpoint (Summer): N-(CH)12
 Date and Time: 04/06/2019 11:09

FL, Max Aperture: 50mm, 1.75
 Tripod Height: 1.5m
 Viewpoint Ground Height: 21.8m AOD
 Viewpoint Grid Reference: 562247E, 180911N

Distance to Order Limits: 0m
 View Direction (Centre of View): ENE
 GPS Accuracy: 5m

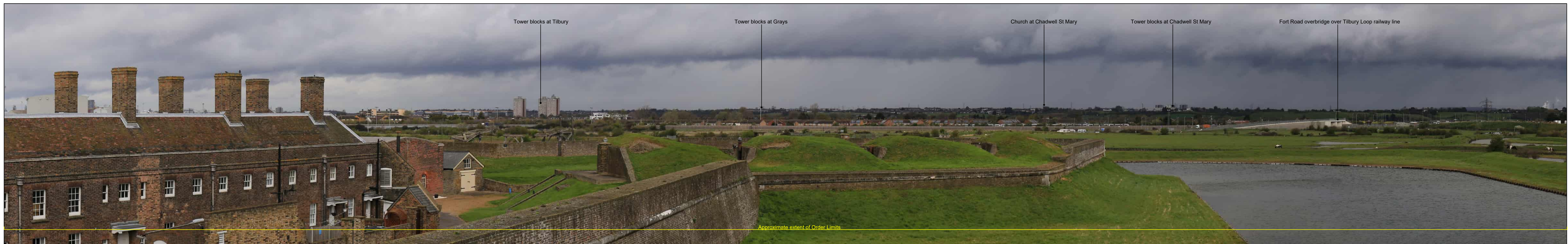


LOWER THAMES CROSSING
 5th Floor Beaufort House
 15 St Botolph Street
 London EC3A 7DT

Project: LOWER THAMES CROSSING
 Drawing title: Figure 6.6
 Representative Viewpoints - Summer View
 Heritage Viewpoint N-(CH)12
 Sheet 2 of 2

| | | |
|---|----|-------------------|
| Drawn | BB | Date - 12/09/2022 |
| Checked | DL | Date - 12/09/2022 |
| Approved | CD | Date - 12/09/2022 |
| Drawing number HE540039-CJV-ELS-SZP_ZZ000000_Z-DR-LV-00210 | | |

Status: PINS SUBMISSION
 Revision: P02
 Application Document No: TR010032/APP/6.2



| P02 | S9 | 12/07/2023 | Deadline 1 | BB | DL | CD |
|-----|--------|------------|---------------------|-------|--------|---------|
| P01 | S8 | 12/09/2022 | First Issued | BB | DL | CD |
| Rev | Status | Rev. Date | Purpose of revision | Drawn | Chck'd | Apprv'd |

For location see Figure 7.16 - Visual Effects Drawing with Representative Viewpoint Locations

Camera: Canon EOS 6D MkII
 Lens: Canon EF 50mm f/1.8 STM
 Equipment: Manfrotto MA 454 Micro Positioning Plate
 Manfrotto SBH-100 Ball Head

Upper Viewpoint (Summer): N-01
 Date and Time: 06/04/2022 09:21

FL, Max Aperture: 50mm, 1.75
 Tripod Height: 1.5m
 Viewpoint Ground Height: 2.8m AOD
 Viewpoint Grid Reference: 565211E, 175312N

Distance to Order Limits: 730m
 View Direction: NNE
 GPS Accuracy: 5m

Lower Viewpoint (Summer): N-01
 Date and Time: 24/06/2019 06:32

FL, Max Aperture: 50mm, 1.75
 Tripod Height: 1.5m
 Viewpoint Ground Height: 2.8m AOD
 Viewpoint Grid Reference: 565211E, 175312N

Distance to Order Limits: 730m
 View Direction: NNE
 GPS Accuracy: 5m



LOWER THAMES CROSSING
 5th Floor Beaufort House
 15 St Botolph Street
 London EC3A 7DT

Project: LOWER THAMES CROSSING
 Drawing title: Figure 6.6
 Representative Viewpoints - Winter and Summer Views
 Heritage Viewpoint N-01
 Sheet 1 of 2

| | | |
|---|----|-------------------|
| Drawn | BB | Date - 12/09/2022 |
| Checked | DL | Date - 12/09/2022 |
| Approved | CD | Date - 12/09/2022 |
| Drawing number | | |
| HE540039-CJV-ELS-SZP_ZZ000000_Z-DR-LV-00222 | | |

Status: **PINS SUBMISSION**
 Revision: P02
 Application Document No: TR010032/AP P/6.2



| P02 | S9 | 12/07/2023 | Deadline 1 | BB | DL | CD |
|-----|--------|------------|---------------------|-------|--------|---------|
| P01 | S8 | 12/09/2022 | First Issued | BB | DL | CD |
| Rev | Status | Rev. Date | Purpose of revision | Drawn | Chck'd | Apprv'd |

For location see Figure 7.16 - Visual Effects Drawing with Representative Viewpoint Locations

Camera: Canon EOS 6D MkII
 Lens: Canon EF 50mm f/1.8 STM
 Equipment: Manfrotto MA 454 Micro Positioning Plate
 Manfrotto SBH-100 Ball Head

Upper Viewpoint (Summer): N-01
 Date and Time: 06/04/2022 09:21

FL, Max Aperture: 50mm, 1.75
 Tripod Height: 1.5m
 Viewpoint Ground Height: 2.8m AOD
 Viewpoint Grid Reference: 565211E, 175312N

Distance to Order Limits: 730m
 View Direction (Centre of View): NNE
 GPS Accuracy: 5m

Lower Viewpoint (Summer): N-01
 Date and Time: 24/06/2019 06:32

FL, Max Aperture: 50mm, 1.75
 Tripod Height: 1.5m
 Viewpoint Ground Height: 2.8m AOD
 Viewpoint Grid Reference: 565211E, 175312N

Distance to Order Limits: 730m
 View Direction (Centre of View): NNE
 GPS Accuracy: 5m



Client

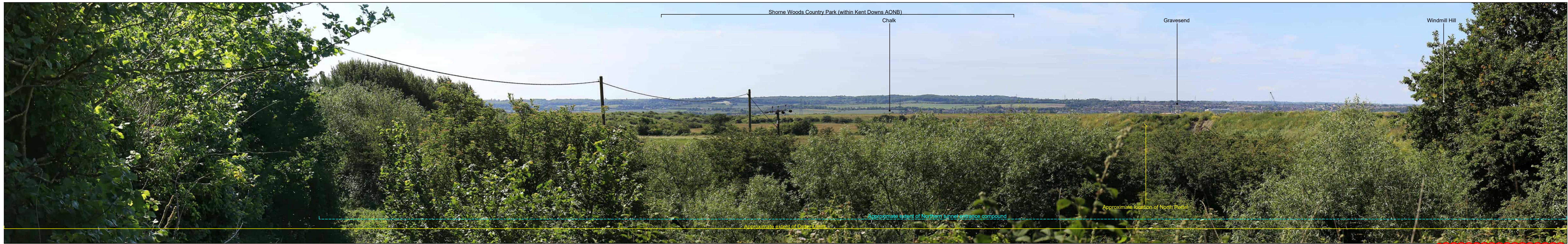
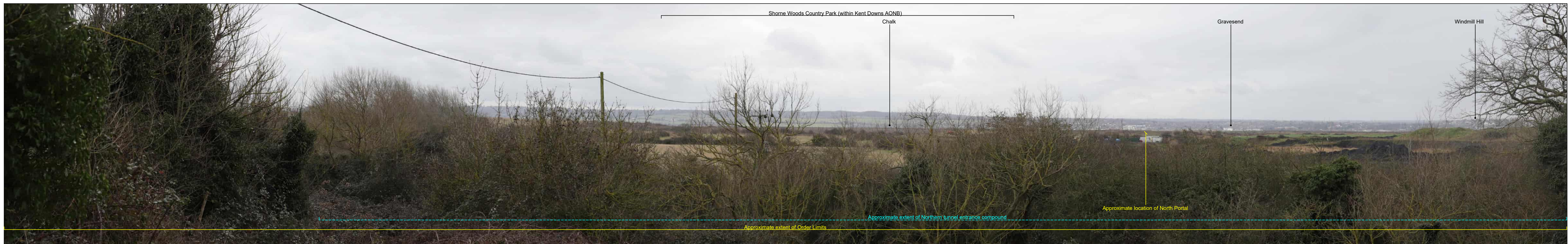
LOWER THAMES CROSSING
 5th Floor Beaufort House
 15 St Botolph Street
 London EC3A 7DT

Project

LOWER THAMES CROSSING
 Drawing title: Figure 6.6
 Representative Viewpoints - Winter and Summer Views
 Heritage Viewpoint N-01
 Sheet 2 of 2

| | | |
|---|----|-------------------|
| Drawn | BB | Date - 12/09/2022 |
| Checked | DL | Date - 12/09/2022 |
| Approved | CD | Date - 12/09/2022 |
| Drawing number HE540039-CJV-ELS-SZP_ZZ000000_Z-DR-LV-00223 | | |

Status: **PINS SUBMISSION**
 Revision: P02
 Application Document No: TR010032/AP/P/0.2



| P02 | S9 | 12/07/2023 | Deadline 1 | BB | DL | CD |
|-----|--------|------------|---------------------|-------|--------|---------|
| P01 | S8 | 12/09/2022 | First Issued | BB | DL | CD |
| Rev | Status | Rev. Date | Purpose of revision | Drawn | Chck'd | Apprv'd |

For location see Figure 7.16 - Visual Effects Drawing with Representative Viewpoint Locations

Camera: Canon EOS 6D MkII
 Lens: Canon EF 50mm f/1.8 STM
 Equipment: Manfrotto MA 454 Micro Positioning Plate
 Manfrotto SBH-100 Ball Head

Upper Viewpoint (Summer): N-06
 Date and Time: 18/02/2019 14:45

FL, Max Aperture: 50mm, 1.75
 Tripod Height: 1.5m
 Viewpoint Ground Height: 4.3m AOD
 Viewpoint Grid Reference: 567539E, 177129N

Distance to Order Limits: 0m
 View Direction (Centre of View): SSE
 GPS Accuracy: 5m

Lower Viewpoint (Summer): N-06
 Date and Time: 14/06/2022 08:55

FL, Max Aperture: 50mm, 1.75
 Tripod Height: 1.5m
 Viewpoint Ground Height: 4.3m AOD
 Viewpoint Grid Reference: 567539E, 177129N

Distance to Order Limits: 0m
 View Direction (Centre of View): SSE
 GPS Accuracy: 5m



Client

LOWER THAMES CROSSING
 5th Floor Beaufort House
 15 St Botolph Street
 London EC3A 7DT

Project

LOWER THAMES CROSSING
 Drawing title: Figure 6.6
 Representative Viewpoints - Winter and Summer Views
 Heritage Viewpoint N-06
 Sheet 1 of 1

| | | |
|---|----|-------------------|
| Drawn | BB | Date - 12/09/2022 |
| Checked | DL | Date - 12/09/2022 |
| Approved | CD | Date - 12/09/2022 |
| Drawing number HE540039-CJV-ELS-SZP_ZZ000000_Z-DR-LV-00224 | | |

Status: **PINS SUBMISSION**
 Revision: P02
 Application Document No: TR010032/APP/6.2



| P02 | S9 | 12/07/2023 | Deadline 1 | BB | DL | CD |
|-----|--------|------------|---------------------|-------|--------|---------|
| P01 | S8 | 12/09/2022 | First Issued | BB | DL | CD |
| Rev | Status | Rev. Date | Purpose of revision | Drawn | Chck'd | Apprv'd |

For location see Figure 7.16 - Visual Effects Drawing with Representative Viewpoint Locations

Camera: Canon EOS 6D MkII
 Lens: Canon EF 50mm f/1.8 STM
 Equipment: Manfrotto MA 454 Micro Positioning Plate
 Manfrotto SBH-100 Ball Head

Upper Viewpoint (Summer): N-08
 Date and Time: 18/02/2019 14:52

FL, Max Aperture: 50mm, 1.75
 Tripod Height: 1.5m
 Viewpoint Ground Height: 4.9m AOD
 Viewpoint Grid Reference: 566777E, 177724N

Distance to Order Limits: 0m
 View Direction (Centre of View): E
 GPS Accuracy: 5m

Lower Viewpoint (Summer): N-08
 Date and Time: 03/06/2019 14:55

FL, Max Aperture: 50mm, 1.75
 Tripod Height: 1.5m
 Viewpoint Ground Height: 4.9m AOD
 Viewpoint Grid Reference: 566777E, 177724N

Distance to Order Limits: 0m
 View Direction (Centre of View): E
 GPS Accuracy: 5m



Client

LOWER THAMES CROSSING

5th Floor Beaufort House
 15 St Botolph Street
 London EC3A 7DT

Project

LOWER THAMES CROSSING

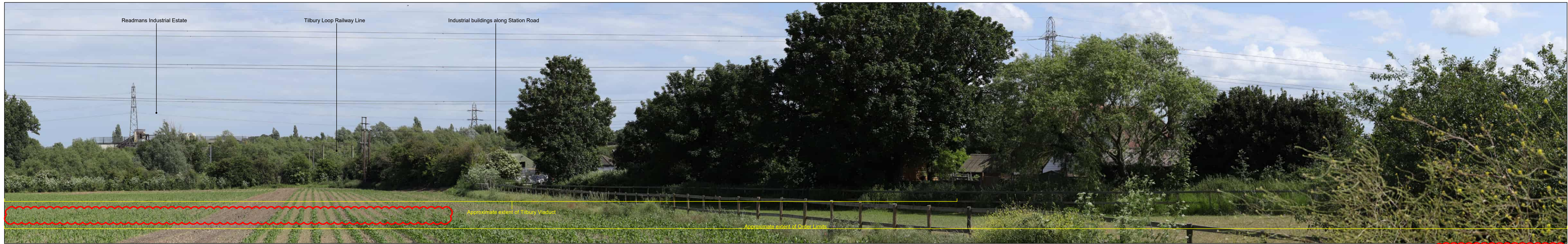
Drawing title: Figure 6.6
 Representative Viewpoints - Winter and Summer Views
 Heritage Viewpoint N-08
 Sheet 1 of 2

| | | |
|---|----|-------------------|
| Drawn | BB | Date - 12/09/2022 |
| Checked | DL | Date - 12/09/2022 |
| Approved | CD | Date - 12/09/2022 |
| Drawing number HE540039-CJV-ELS-SZP_ZZ000000_Z-DR-LV-00225 | | |

Status: **PINS SUBMISSION**

Revision: P02

Application Document No: TR010032/AP/P/0.2



| P02 | S9 | 12/07/2023 | Deadline 1 | BB | DL | CD |
|-----|--------|------------|---------------------|-------|-------|--------|
| P01 | S8 | 12/09/2022 | First Issued | BB | DL | CD |
| Rev | Status | Rev. Date | Purpose of revision | Drawn | Chk'd | Appr'd |

For location see Figure 7.16 - Visual Effects Drawing with Representative Viewpoint Locations

Upper Viewpoint (Summer): N-08
 Date and Time: 18/02/2019 14:52
 Camera: Canon EOS 6D MkII
 Lens: Canon EF 50mm f/1.8 STM
 Equipment: Manfrotto MA 454 Micro Positioning Plate
 Manfrotto SBH-100 Ball Head

Lower Viewpoint (Summer): N-08
 Date and Time: 03/06/2019 14:55
 FL, Max Aperture: 50mm, 1.75
 Tripod Height: 1.5m
 Viewpoint Ground Height: 4.9m AOD
 Viewpoint Grid Reference: 566777E, 177724N
 Distance to Order Limits: 0m
 View Direction (Centre of View): E
 GPS Accuracy: 5m

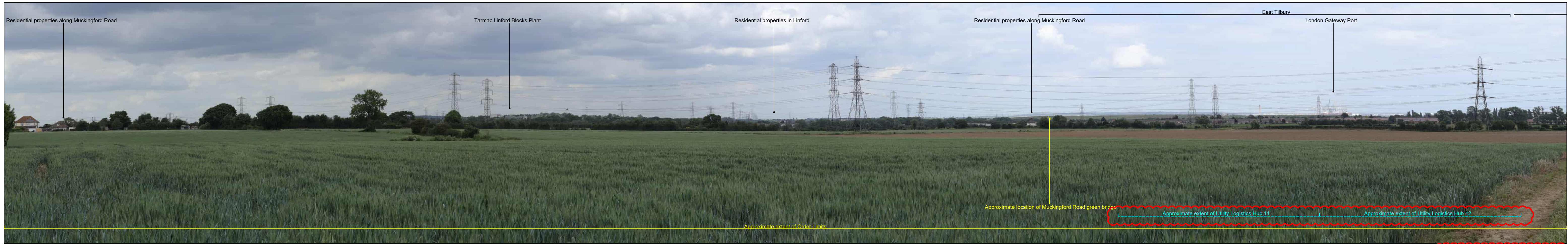


Client
LOWER THAMES CROSSING
 5th Floor Beaufort House
 15 St Botolph Street
 London EC3A 7DT

Project
 LOWER THAMES CROSSING
 Drawing title: Figure 6.6
 Representative Viewpoints - Winter and Summer Views
 Heritage Viewpoint N-08
 Sheet 2 of 2

| | | |
|---|----|-------------------|
| Drawn | BB | Date - 12/09/2022 |
| Checked | DL | Date - 12/09/2022 |
| Approved | CD | Date - 12/09/2022 |
| Drawing number HE540039-CJV-ELS-SZP_ZZ000000_Z-DR-LV-00226 | | |

Status: **PINS SUBMISSION**
 Revision: P02
 Application Document No: TR010032/AP/P/0.2



| P02 | S9 | 12/07/2023 | Deadline 1 | BB | DL | CD |
|-----|--------|------------|---------------------|-------|--------|---------|
| P01 | S8 | 12/09/2022 | First Issued | BB | DL | CD |
| Rev | Status | Rev. Date | Purpose of revision | Drawn | Chck'd | Apprv'd |

For location see Figure 7.16 - Visual Effects Drawing with Representative Viewpoint Locations

Camera: Canon EOS 6D MkII
 Lens: Canon EF 50mm f/1.8 STM
 Equipment: Manfrotto MA 454 Micro Positioning Plate
 Manfrotto SBH-100 Ball Head

Upper Viewpoint (Summer): N-09
 Date and Time: 18/02/2019 15:15

FL, Max Aperture: 50mm, 1.75
 Tripod Height: 1.5m
 Viewpoint Ground Height: 26.3m AOD
 Viewpoint Grid Reference: 566219E, 178124N

Lower Viewpoint (Summer): N-09
 Date and Time: 03/06/2019 15:13

FL, Max Aperture: 50mm, 1.75
 Tripod Height: 1.5m
 Viewpoint Ground Height: 26.3m AOD
 Viewpoint Grid Reference: 566219E, 178124N



Client
national highways

LOWER THAMES CROSSING
 5th Floor Beaufort House
 15 St Botolph Street
 London EC3A 7DT

Project
 LOWER THAMES CROSSING

Drawing title
 Figure 6.6
 Representative Viewpoints - Winter and Summer Views
 Heritage Viewpoint N-09
 Sheet 1 of 2

| | | |
|---|----|-------------------|
| Drawn | BB | Date - 12/09/2022 |
| Checked | DL | Date - 12/09/2022 |
| Approved | CD | Date - 12/09/2022 |
| Drawing number HE540039-CJV-ELS-SZP_ZZ000000_Z-DR-LV-00227 | | |

Status
PINS SUBMISSION

Revision
 P02

Application Document No: TR010032/AP/P/0.2



| P02 | S9 | 12/07/2023 | Deadline 1 | BB | DL | CD |
|-----|--------|------------|---------------------|-------|--------|---------|
| P01 | S8 | 12/09/2022 | First Issued | BB | DL | CD |
| Rev | Status | Rev. Date | Purpose of revision | Drawn | Chck'd | Apprv'd |

For location see Figure 7.16 - Visual Effects Drawing with Representative Viewpoint Locations

Camera: Canon EOS 6D MkII
 Lens: Canon EF 50mm f/1.8 STM
 Equipment: Manfrotto MA 454 Micro Positioning Plate
 Manfrotto SBH-100 Ball Head

Upper Viewpoint (Summer): N-09
 Date and Time: 18/02/2019 15:15

FL, Max Aperture: 50mm, 1.75
 Tripod Height: 1.5m
 Viewpoint Ground Height: 26.3m AOD
 Viewpoint Grid Reference: 566219E, 178124N

Lower Viewpoint (Summer): N-09
 Date and Time: 03/06/2019 15:13

FL, Max Aperture: 50mm, 1.75
 Tripod Height: 1.5m
 Viewpoint Ground Height: 26.3m AOD
 Viewpoint Grid Reference: 566219E, 178124N



Client
national highways

LOWER THAMES CROSSING
 5th Floor Beaufort House
 15 St Botolph Street
 London EC3A 7DT

Project
 LOWER THAMES CROSSING

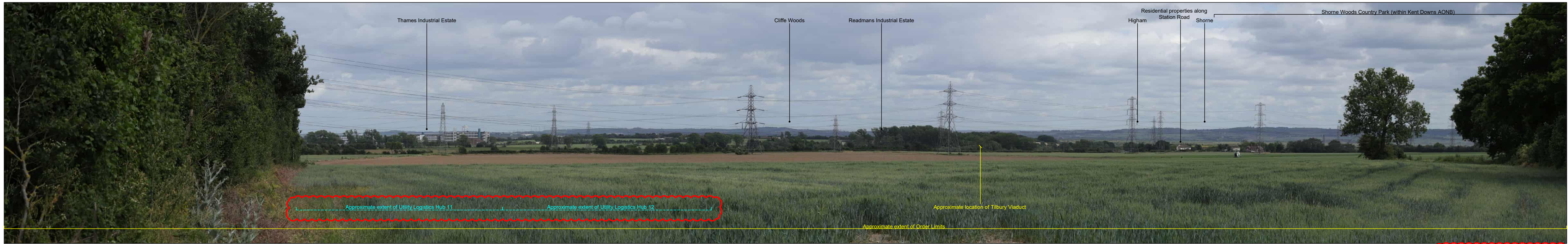
Drawing title
 Figure 6.6
 Representative Viewpoints - Winter and Summer Views
 Heritage Viewpoint N-09
 Sheet 2 of 2

| | | |
|---|----|-------------------|
| Drawn | BB | Date - 12/09/2022 |
| Checked | DL | Date - 12/09/2022 |
| Approved | CD | Date - 12/09/2022 |
| Drawing number HE540039-CJV-ELS-SZP_ZZ000000_Z-DR-LV-00228 | | |

Status
PINS SUBMISSION

Revision
 P02

Application Document No: TR010032/AP/P/6.2



| P02 | S9 | 12/07/2023 | Deadline 1 | BB | DL | CD |
|-----|--------|------------|---------------------|-------|-------|---------|
| P01 | S8 | 12/09/2022 | First Issued | BB | DL | CD |
| Rev | Status | Rev. Date | Purpose of revision | Drawn | Chk'd | Apprv'd |

For location see Figure 7.16 - Visual Effects Drawing with Representative Viewpoint Locations

Camera: Canon EOS 6D MkII
 Lens: Canon EF 50mm f/1.8 STM
 Equipment: Manfrotto MA 454 Micro Positioning Plate
 Manfrotto SBH-100 Ball Head

Winter Viewpoint (Top): N-11
 Date and Time: 18/02/2019 15:52

FL, Max Aperture: 50mm, 1.75
 Tripod Height: 1.5m
 Viewpoint Ground Height: 19m AOD
 Viewpoint Grid Reference: 566222E, 178572N

Distance to Order Limits: 13m
 View Direction (Centre of View): SE
 GPS Accuracy: 5m

Summer Viewpoint: N-11
 Date and Time: 03/06/2019 15:52

FL, Max Aperture: 50mm, 1.75
 Tripod Height: 1.5m
 Viewpoint Ground Height: 19m AOD
 Viewpoint Grid Reference: 566222E, 178572N

Distance to Order Limits: 13m
 View Direction (Centre of View): SE
 GPS Accuracy: 5m

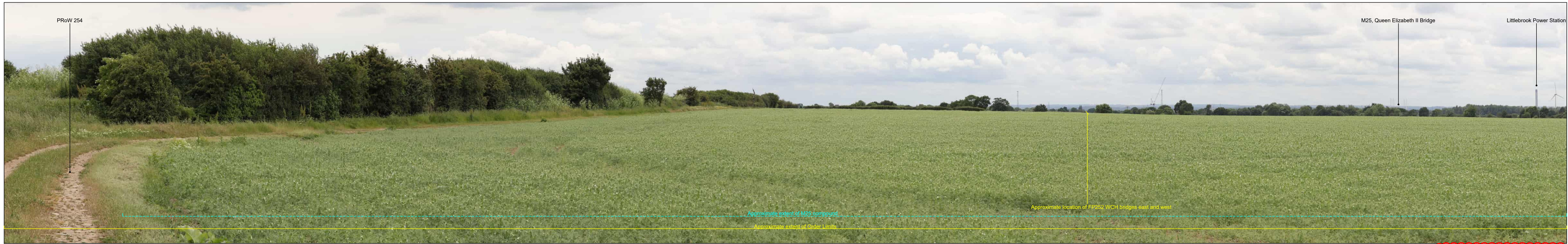


LOWER THAMES CROSSING
 5th Floor Beaufort House
 15 St Botolph Street
 London EC3A 7DT

Project: LOWER THAMES CROSSING
 Drawing title: Figure 6.6
 Representative Viewpoints - Winter and Summer Views
 Heritage Viewpoint N-11
 Sheet 1 of 1

| | | |
|---|----|-------------------|
| Drawn | BB | Date - 12/09/2022 |
| Checked | DL | Date - 12/09/2022 |
| Approved | CD | Date - 12/09/2022 |
| Drawing number HE540039-CJV-ELS-SZP_ZZ000000_Z-DR-LV-00229 | | |

Status: PINS SUBMISSION
 Revision: P02
 Application Document No: TR010032/APP/6.2



| P02 | S9 | 12/07/2023 | Deadline 1 | BB | DL | CD |
|-----|--------|------------|---------------------|-------|--------|---------|
| P01 | S8 | 12/09/2022 | First Issued | BB | DL | CD |
| Rev | Status | Rev. Date | Purpose of revision | Drawn | Chck'd | Apprv'd |

For location see Figure 7.16 - Visual Effects Drawing with Representative Viewpoint Locations

Camera: Canon EOS 6D MkII
 Lens: Canon EF 50mm f/1.8 STM
 Equipment: Manfrotto MA 454 Micro Positioning Plate
 Manfrotto SBH-100 Ball Head

Winter Viewpoint (Top): N-38
 Date and Time: 22/02/2019 11:25

FL, Max Aperture: 50mm, 1.75
 Tripod Height: 1.5m
 Viewpoint Ground Height: 28.3m AOD
 Viewpoint Grid Reference: 558887E, 184602N

Distance to Order Limits: 0m
 View Direction (Centre of View): SSW
 GPS Accuracy: 5m

Summer Viewpoint: N-38
 Date and Time: 05/06/2019 13:22

FL, Max Aperture: 50mm, 1.75
 Tripod Height: 1.5m
 Viewpoint Ground Height: 28.3m AOD
 Viewpoint Grid Reference: 558887E, 184602N

Distance to Order Limits: 0m
 View Direction (Centre of View): SSW
 GPS Accuracy: 5m



Client

LOWER THAMES CROSSING
 5th Floor Beaufort House
 15 St Botolph Street
 London EC3A 7DT

Project

LOWER THAMES CROSSING
 Drawing title: Figure 6.6
 Representative Viewpoints - Winter and Summer Views
 Heritage Viewpoint N-38
 Sheet 1 of 2

| | | |
|----------------|----|-------------------|
| Drawn | BB | Date - 12/09/2022 |
| Checked | DL | Date - 12/09/2022 |
| Approved | CD | Date - 12/09/2022 |
| Drawing number | | |

Status: **PINS SUBMISSION**
 Revision: P02
 Application Document No: TR010032/AP P/6.2

HE540039-CJV-ELS-SZP_ZZ000000_Z-DR-LV-00230



| P02 | S9 | 12/07/2023 | Deadline 1 | BB | DL | CD |
|-----|--------|------------|---------------------|-------|--------|---------|
| P01 | S8 | 12/09/2022 | First Issued | BB | DL | CD |
| Rev | Status | Rev. Date | Purpose of revision | Drawn | Chck'd | Apprv'd |

For location see Figure 7.16 - Visual Effects Drawing with Representative Viewpoint Locations

Winter Viewpoint (Top):
 Date and Time: N-38 22/02/2019 11:25
 Camera: Canon EOS 6D MkII
 Lens: Canon EF 50mm f/1.8 STM
 Equipment: Manfrotto MA 454 Micro Positioning Plate
 Manfrotto SBH-100 Ball Head

Summer Viewpoint:
 Date and Time: N-38 05/06/2019 13:22
 FL, Max Aperture: 50mm, 1.75
 Tripod Height: 1.5m
 Viewpoint Ground Height: 28.3m AOD
 Viewpoint Grid Reference: 558887E, 184602N
 Distance to Order Limits: 0m
 View Direction (Centre of View): SSW
 GPS Accuracy: 5m



LOWER THAMES CROSSING
 5th Floor Beaufort House
 15 St Botolph Street
 London EC3A 7DT

Project: LOWER THAMES CROSSING
 Drawing title: Figure 6.6
 Representative Viewpoints - Winter and Summer Views
 Heritage Viewpoint N-38
 Sheet 2 of 2

| | | |
|---|----|-------------------|
| Drawn | BB | Date - 12/09/2022 |
| Checked | DL | Date - 12/09/2022 |
| Approved | CD | Date - 12/09/2022 |
| Drawing number HE540039-CJV-ELS-SZP_ZZ000000_Z-DR-LV-00231 | | |

Status: PINS SUBMISSION
 Revision: P02
 Application Document No: TR010032/AP P/6.2



| P02 | S9 | 12/07/2023 | Deadline 1 | BB | DL | CD |
|-----|--------|------------|---------------------|-------|--------|---------|
| P01 | S8 | 12/09/2022 | First Issued | BB | DL | CD |
| Rev | Status | Rev. Date | Purpose of revision | Drawn | Chck'd | Apprv'd |

For location see Figure 7.16 - Visual Effects Drawing with Representative Viewpoint Locations

Camera: Canon EOS 6D MkII
 Lens: Canon EF 50mm f/1.8 STM
 Equipment: Manfrotto MA 454 Micro Positioning Plate
 Manfrotto SBH-100 Ball Head

Winter Viewpoint (Top): N-39
 Date and Time: 22/02/2019 11:10

FL, Max Aperture: 50mm, 1.75
 Tripod Height: 1.5m
 Viewpoint Ground Height: 26.9m AOD
 Viewpoint Grid Reference: 558690E, 184852N

Distance to Order Limits: 0m
 View Direction (Centre of View): W
 GPS Accuracy: 5m

Summer Viewpoint: N-39
 Date and Time: 05/06/2019 13:43

FL, Max Aperture: 50mm, 1.75
 Tripod Height: 1.5m
 Viewpoint Ground Height: 26.9m AOD
 Viewpoint Grid Reference: 558690E, 184852N

Distance to Order Limits: 0m
 View Direction (Centre of View): W
 GPS Accuracy: 5m



Client

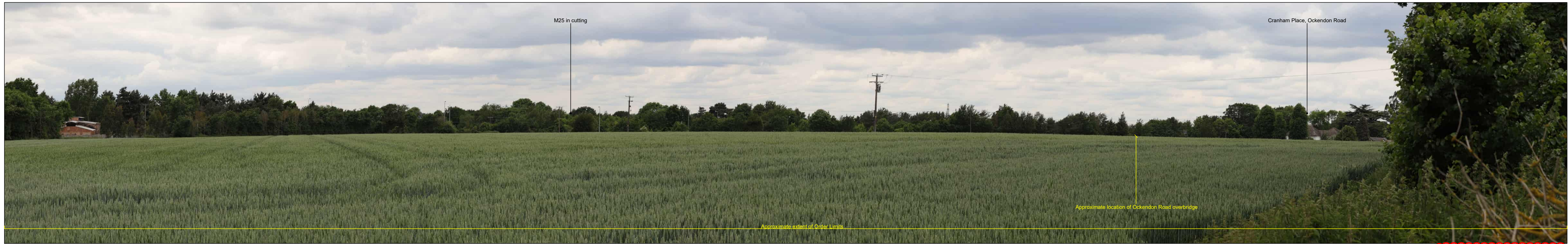
LOWER THAMES CROSSING
 5th Floor Beaufort House
 15 St Botolph Street
 London EC3A 7DT

Project

LOWER THAMES CROSSING
 Drawing title: Figure 6.6
 Representative Viewpoints - Winter and Summer Views
 Heritage Viewpoint N-39
 Sheet 1 of 2

| | | |
|---|----|-------------------|
| Drawn | BB | Date - 12/09/2022 |
| Checked | DL | Date - 12/09/2022 |
| Approved | CD | Date - 12/09/2022 |
| Drawing number HE540039-CJV-ELS-SZP_ZZ000000_Z-DR-LV-00232 | | |

| | |
|--|----------|
| Status | Revision |
| PINS SUBMISSION | P02 |
| Application Document No: TR010032/AP/P/0.2 | |



| P02 | S9 | 12/07/2023 | Deadline 1 | BB | DL | CD |
|-----|--------|------------|---------------------|-------|--------|---------|
| P01 | S8 | 12/09/2022 | First Issued | BB | DL | CD |
| Rev | Status | Rev. Date | Purpose of revision | Drawn | Chck'd | Apprv'd |

For location see Figure 7.16 - Visual Effects Drawing with Representative Viewpoint Locations

Winter Viewpoint (Top): N-39
Date and Time: 22/02/2019 11:10
Camera: Canon EOS 6D MkII
Lens: Canon EF 50mm f/1.8 STM
Equipment: Manfrotto MA 454 Micro Positioning Plate
Manfrotto SBH-100 Ball Head

Summer Viewpoint: N-39
Date and Time: 05/06/2019 13:43
FL, Max Aperture: 50mm, 1.75
Tripod Height: 1.5m
Viewpoint Ground Height: 26.9m AOD
Viewpoint Grid Reference: 558690E, 184852N

Distance to Order Limits: 0m
View Direction (Centre of View): W
GPS Accuracy: 5m



LOWER THAMES CROSSING
5th Floor Beaufort House
15 St Botolph Street
London EC3A 7DT

Project: LOWER THAMES CROSSING
Drawing title: Figure 6.6
Representative Viewpoints - Winter and Summer Views
Heritage Viewpoint N-39
Sheet 2 of 2

| | | |
|--|----|-------------------|
| Drawn | BB | Date - 12/09/2022 |
| Checked | DL | Date - 12/09/2022 |
| Approved | CD | Date - 12/09/2022 |
| Drawing number HE540039-CJV-ELS-SZP_ZZ000000_Z-DR-LV-00233 | | |

Status: **PINS SUBMISSION**
Revision: P02
Application Document No: TR010032/APP/0.2



| P02 | S9 | 12/07/2023 | Deadline 1 | BB | DL | CD |
|-----|--------|------------|---------------------|-------|--------|---------|
| P01 | S8 | 12/09/2022 | First Issued | BB | DL | CD |
| Rev | Status | Rev. Date | Purpose of revision | Drawn | Chck'd | Apprv'd |

For location see Figure 7.16 - Visual Effects Drawing with Representative Viewpoint Locations

Winter Viewpoint (Top):
 Date and Time: N-42
 21/02/2019 15:19
 Camera: Canon EOS 6D MkII
 Lens: Canon EF 50mm f/1.8 STM
 Equipment: Manfrotto MA 454 Micro Positioning Plate
 Manfrotto SBH-100 Ball Head

Summer Viewpoint:
 Date and Time: N-42
 05/06/2019 14:02
 FL, Max Aperture: 50mm, 1.75
 Tripod Height: 1.5m
 Viewpoint Ground Height: 21.5m AOD
 Viewpoint Grid Reference: 558347E, 186106N
 Distance to Order Limits: 20m
 View Direction (Centre of View): SE
 GPS Accuracy: 5m

Client
 national highways

LOWER THAMES CROSSING
 5th Floor Beaufort House
 15 St Botolph Street
 London EC3A 7DT

Project
 LOWER THAMES CROSSING
 Drawing title: Figure 6.6
 Representative Viewpoints - Winter and Summer Views
 Heritage Viewpoint N-42
 Sheet 1 of 2

| | | |
|---|----|-------------------|
| Drawn | BB | Date - 12/09/2022 |
| Checked | DL | Date - 12/09/2022 |
| Approved | CD | Date - 12/09/2022 |
| Drawing number HE540039-CJV-ELS-SZP_ZZ000000_Z-DR-LV-00234 | | |

Status: **PINS SUBMISSION**
 Revision: P02
 Application Document No: TR010032/AP/P/0.2



| P02 | S9 | 12/07/2023 | Deadline 1 | BB | DL | CD |
|-----|--------|------------|---------------------|-------|--------|---------|
| P01 | S8 | 12/09/2022 | First Issued | BB | DL | CD |
| Rev | Status | Rev. Date | Purpose of revision | Drawn | Chck'd | Apprv'd |

For location see Figure 7.16 - Visual Effects Drawing with Representative Viewpoint Locations

Camera: Canon EOS 6D MkII
 Lens: Canon EF 50mm f/1.8 STM
 Equipment: Manfrotto MA 454 Micro Positioning Plate
 Manfrotto SBH-100 Ball Head

Winter Viewpoint (Top):
 Date and Time: N-42
 21/02/2019 15:19

FL, Max Aperture: 50mm, 1.75
 Tripod Height: 1.5m
 Viewpoint Ground Height: 21.5m AOD
 Viewpoint Grid Reference: 558347E, 186106N

Distance to Order Limits: 20m
 View Direction (Centre of View): SE
 GPS Accuracy: 5m

Summer Viewpoint:
 Date and Time: N-42
 05/06/2019 14:02

FL, Max Aperture: 50mm, 1.75
 Tripod Height: 1.5m
 Viewpoint Ground Height: 21.5m AOD
 Viewpoint Grid Reference: 558347E, 186106N

Distance to Order Limits: 20m
 View Direction (Centre of View): SE
 GPS Accuracy: 5m



Client
LOWER THAMES CROSSING
 5th Floor Beaufort House
 15 St Botolph Street
 London EC3A 7DT

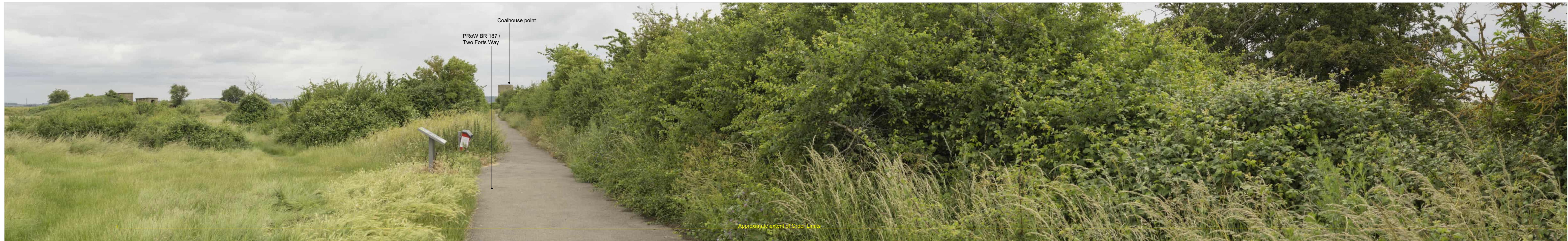
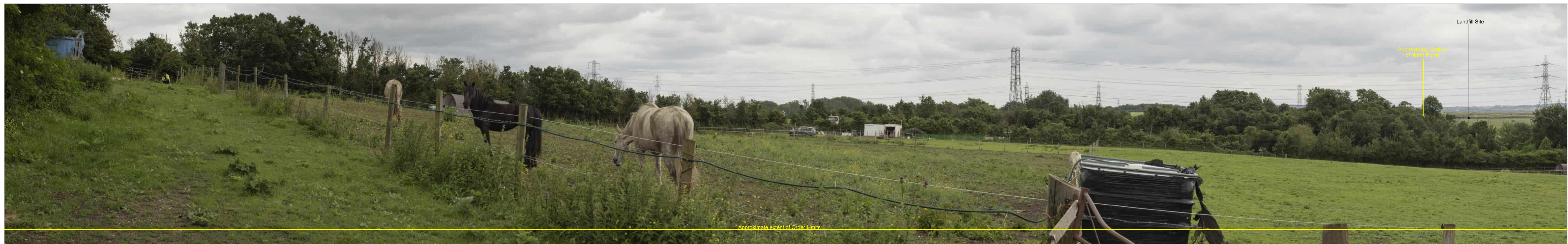
Project
 LOWER THAMES CROSSING

Drawing title
 Figure 6.6
 Representative Viewpoints - Winter and Summer Views
 Heritage Viewpoint N-42
 Sheet 2 of 2

| | | |
|---|----|-------------------|
| Drawn | BB | Date - 12/09/2022 |
| Checked | DL | Date - 12/09/2022 |
| Approved | CD | Date - 12/09/2022 |
| Drawing number HE540039-CJV-ELS-SZP_ZZ000000_Z-DR-LV-00235 | | |

Status
PINS SUBMISSION
 Application Document No: TR010032/AP P/6.2

Revision
 P02



| P02 | S9 | 12/07/2023 | Deadline 1 | BB | DL | CD |
|-----|--------|------------|---------------------|-------|--------|---------|
| P01 | S8 | 12/09/2022 | First Issued | BB | DL | CD |
| Rev | Status | Rev. Date | Purpose of revision | Drawn | Chck'd | Apprv'd |

For location see Figure 7.16 - Visual Effects Drawing with Representative Viewpoint Locations

Camera: Canon EOS 6D MkII
 Lens: Canon EF 50mm f/1.8 STM
 Equipment: Manfrotto MA 454 Micro Positioning Plate
 Manfrotto SBH-100 Ball Head

Upper Viewpoint (Summer): N-D06
 Date and Time: 22/06/2021 13:26

FL, Max Aperture: 50mm, 1.75
 Tripod Height: 1.5m
 Viewpoint Ground Height: 17.6m AOD
 Viewpoint Grid Reference: 568179E, 177655N

Distance to Order Limits: 137m
 View Direction (Centre of View): SE
 GPS Accuracy: 5m

Lower Viewpoint (Summer): N-D07
 Date and Time: 22/06/2021 16:22

FL, Max Aperture: 50mm, 1.75
 Tripod Height: 1.5m
 Viewpoint Ground Height: 4.7m AOD
 Viewpoint Grid Reference: 568973E, 176644N

Distance to Order Limits: 20m
 View Direction (Centre of View): W
 GPS Accuracy: 5m



Client

LOWER THAMES CROSSING
 5th Floor Beaufort House
 15 St Botolph Street
 London EC3A 7DT

Project

LOWER THAMES CROSSING
 Drawing title: Figure 6.6
 Representative Viewpoints - Summer View
 Heritage Viewpoint N-D06 & N-D07
 Sheet 1 of 2

| | | |
|---|----|-------------------|
| Drawn | BB | Date - 12/09/2022 |
| Checked | DL | Date - 12/09/2022 |
| Approved | CD | Date - 12/09/2022 |
| Drawing number HE540039-CJV-ELS-SZP_ZZ000000_Z-DR-LV-00241 | | |

| | |
|--|----------|
| Status | Revision |
| PINS SUBMISSION | P02 |
| Application Document No: TR010032/AP P/0.2 | |



| P02 | S9 | 12/07/2023 | Deadline 1 | BB | DL | CD |
|-----|--------|------------|---------------------|-------|--------|---------|
| P01 | S8 | 12/09/2022 | First Issued | BB | DL | CD |
| Rev | Status | Rev. Date | Purpose of revision | Drawn | Chck'd | Apprv'd |

For location see Figure 7.16 - Visual Effects Drawing with Representative Viewpoint Locations

Camera: Canon EOS 6D MkII
 Lens: Canon EF 50mm f/1.8 STM
 Equipment: Manfrotto MA 454 Micro Positioning Plate
 Manfrotto SBH-100 Ball Head

Upper Viewpoint (Summer): N-D06
 Date and Time: 22/06/2021 13:26

FL, Max Aperture: 50mm, 1.75
 Tripod Height: 1.5m
 Viewpoint Ground Height: 17.6m AOD
 Viewpoint Grid Reference: 568179E, 177655N

Distance to Order Limits: 137m
 View Direction (Centre of View): SE
 GPS Accuracy: 5m

Lower Viewpoint (Summer): N-D07
 Date and Time: 22/06/2021 16:22

FL, Max Aperture: 50mm, 1.75
 Tripod Height: 1.5m
 Viewpoint Ground Height: 4.7m AOD
 Viewpoint Grid Reference: 568973E, 177644N

Distance to Order Limits: 20m
 View Direction (Centre of View): W
 GPS Accuracy: 5m



LOWER THAMES CROSSING
 5th Floor Beaufort House
 15 St Botolph Street
 London EC3A 7DT

Project: LOWER THAMES CROSSING
 Drawing title: Figure 6.6
 Representative Viewpoints - Summer View
 Heritage Viewpoint N-D06 & N-D07
 Sheet 2 of 2

| | | |
|---|----|-------------------|
| Drawn | BB | Date - 12/09/2022 |
| Checked | DL | Date - 12/09/2022 |
| Approved | CD | Date - 12/09/2022 |
| Drawing number HE540039-CJV-ELS-SZP_ZZ000000_Z-DR-LV-00242 | | |

| | |
|---|----------|
| Status | Revision |
| PINS SUBMISSION | P02 |
| Application Document No: TR010032/APP/0.2 | |

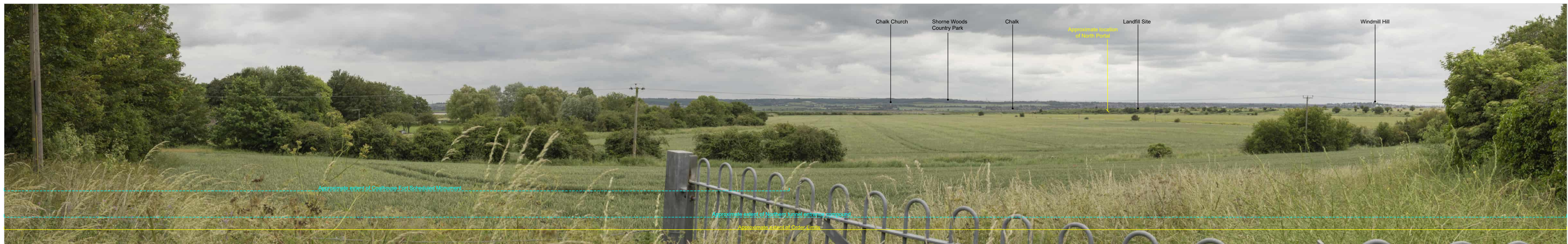


PHOTO FRAME INTENTIONALLY BLANK

| P02 | S9 | 12/07/2023 | Deadline 1 | BB | DL | CD |
|-----|--------|------------|---------------------|-------|--------|---------|
| P01 | S8 | 12/09/2022 | First Issued | BB | DL | CD |
| Rev | Status | Rev. Date | Purpose of revision | Drawn | Chck'd | Apprv'd |

For location see Figure 7.16 - Visual Effects Drawing with Representative Viewpoint Locations

Camera: Canon EOS 6D MkII
 Lens: Canon EF 50mm f/1.8 STM
 Equipment: Manfrotto MA 454 Micro Positioning Plate
 Manfrotto SBH-100 Ball Head

Upper Viewpoint (Summer): N-D08
 Date and Time: 22/06/2021 15:11

FL, Max Aperture: 50mm, 1.75
 Tripod Height: 1.5m
 Viewpoint Ground Height: 8.6m AOD
 Viewpoint Grid Reference: 568860E, 176961N

Distance to Order Limits: 0m
 View Direction (Centre of View): WSW
 GPS Accuracy: 5m



Client

LOWER THAMES CROSSING
 5th Floor Beaufort House
 15 St Botolph Street
 London EC3A 7DT

Project

LOWER THAMES CROSSING

Drawing title

Figure 6.6
 Representative Viewpoints - Summer View
 Heritage Viewpoint N-D08
 Sheet 1 of 2

| | | |
|---|----|-------------------|
| Drawn | BB | Date - 12/09/2022 |
| Checked | DL | Date - 12/09/2022 |
| Approved | CD | Date - 12/09/2022 |
| Drawing number | | |
| HE540039-CJV-ELS-SZP_ZZ000000_Z-DR-LV-00243 | | |

| | |
|---|----------|
| Status | Revision |
| PINS SUBMISSION | P02 |
| Application Document No: TR010032/APP/6.2 | |

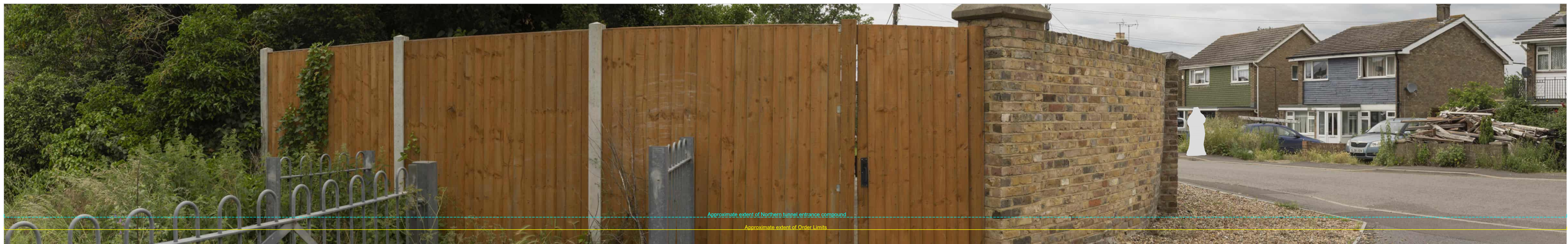


PHOTO FRAME INTENTIONALLY BLANK

| P02 | S9 | 12/07/2023 | Deadline 1 | BB | DL | CD |
|-----|--------|------------|---------------------|-------|--------|---------|
| P01 | S8 | 12/09/2022 | First Issued | BB | DL | CD |
| Rev | Status | Rev. Date | Purpose of revision | Drawn | Chck'd | Apprv'd |

| | | | | | |
|---|--|---------------------------|--|---------------------------|-----|
| For location see Figure 7.16 - Visual Effects Drawing with Representative Viewpoint Locations | | | Upper Viewpoint (Summer): N-D08 | | |
| | | | Date and Time: 22/06/2021 15:11 | | |
| Camera: | Canon EOS 6D MkII | FL, Max Aperture: | 50mm, 1.75 | Distance to Order Limits: | 0m |
| Lens: | Canon EF 50mm f/1.8 STM | Tripod Height: | 1.5m | View Direction: | WSW |
| Equipment: | Manfrotto MA 454 Micro Positioning Plate | Viewpoint Ground Height: | 8.6m AOD | (Centre of View): | WSW |
| | Manfrotto SBH-100 Ball Head | Viewpoint Grid Reference: | 568860E, 176961N | GPS Accuracy: | 5m |



LOWER THAMES CROSSING
 5th Floor Beaufort House
 15 St Botolph Street
 London EC3A 7DT

Project: LOWER THAMES CROSSING
 Drawing title: Figure 6.6
 Representative Viewpoints - Summer View
 Heritage Viewpoint N-D08
 Sheet 2 of 2

| | | |
|---|----|-------------------|
| Drawn | BB | Date - 12/09/2022 |
| Checked | DL | Date - 12/09/2022 |
| Approved | CD | Date - 12/09/2022 |
| Drawing number | | |
| HE540039-CJV-ELS-SZP_ZZ000000_Z-DR-LV-00244 | | |

| | |
|---|----------|
| Status | Revision |
| PINS SUBMISSION | P02 |
| Application Document No: TR010032/APP/6.2 | |

If you need help accessing this or any other National Highways information, please call **0300 123 5000** and we will help you.

© Crown copyright 2023.

You may re-use this information (not including logos) free of charge in any format or medium, under the terms of the Open Government Licence. To view this licence:

visit www.nationalarchives.gov.uk/doc/open-government-licence/

write to the **Information Policy Team, The National Archives, Kew, London TW9 4DU**, or email psi@nationalarchives.gsi.gov.uk.

Mapping (where present): © Crown copyright and database rights 2023 OS 100030649. You are permitted to use this data solely to enable you to respond to, or interact with, the organisation that provided you with the data. You are not permitted to copy, sub-license, distribute or sell any of this data to third parties in any form.

If you have any enquiries about this publication email info@nationalhighways.co.uk or call **0300 123 5000***.

*Calls to 03 numbers cost no more than a national rate call to an 01 or 02 number and must count towards any inclusive minutes in the same way as 01 and 02 calls. These rules apply to calls from any type of line including mobile, BT, other fixed line or payphone. Calls may be recorded or monitored.

Printed on paper from well-managed forests and other controlled sources when issued directly by National Highways.

Registered office Bridge House, 1 Walnut Tree Close, Guildford GU1 4LZ

National Highways Company Limited registered in England and Wales number 09346363